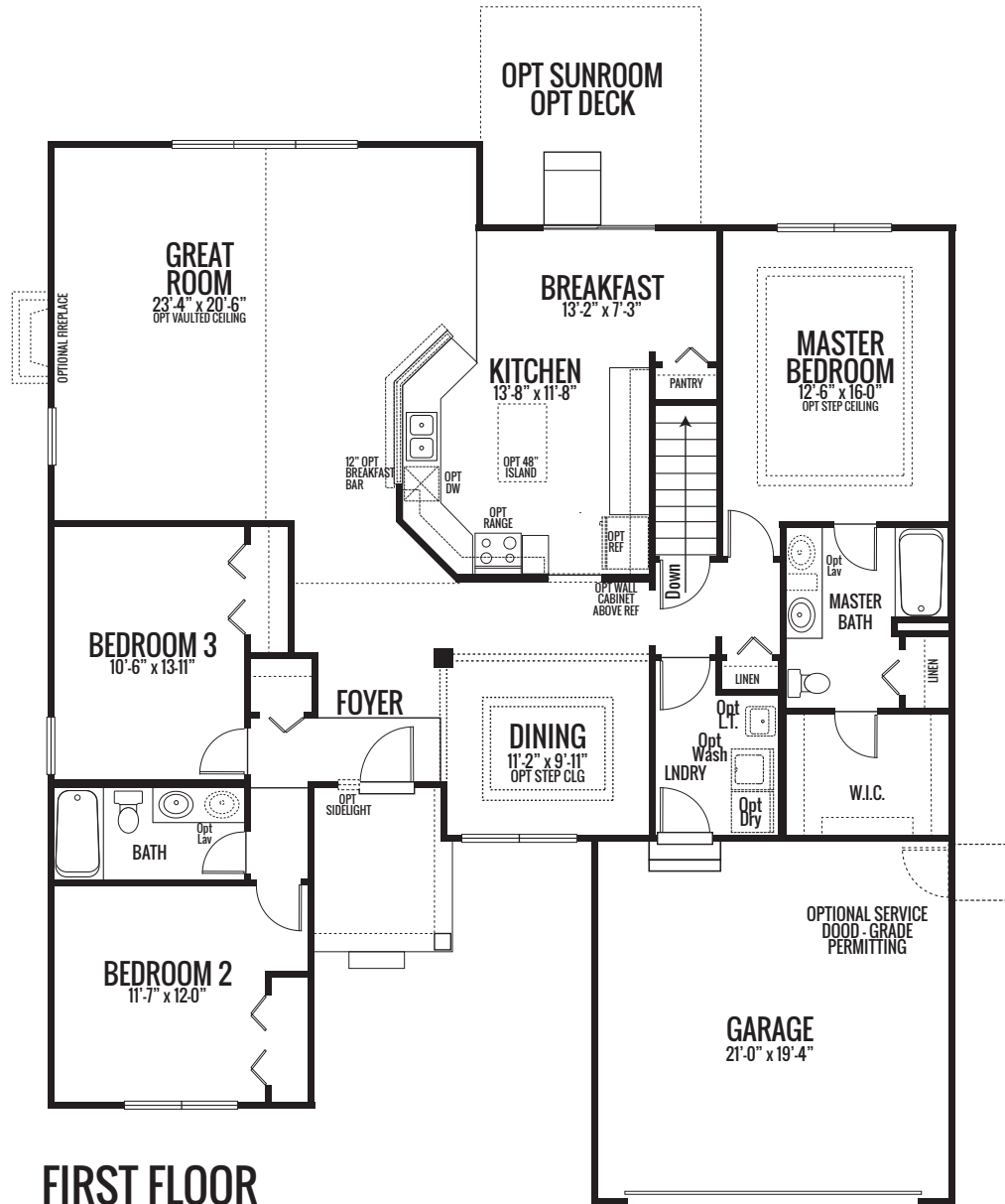


# GRAND RIDGE

## THE WYSTERIA

2005 sq. ft. | 3 Bed | 2 Bath

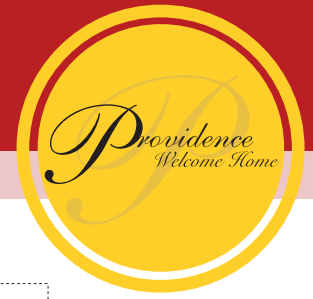


FIRST FLOOR

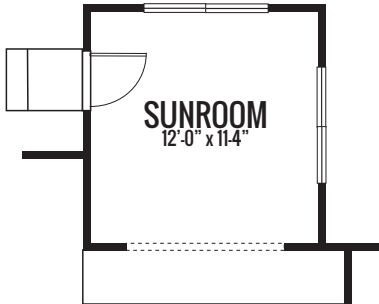
Artist's renderings may vary in precise detail as compared to actual construction. All dimensions are approximate. Providence Real Estate Development, LLC, in an effort to improve its product, reserves the right to make changes without notice. Actual home may be built as shown or reversed as dictated by engineered site plan.

# GRAND RIDGE

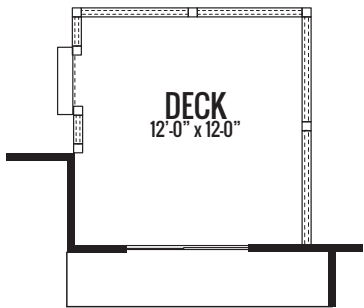
## THE WYSTERIA



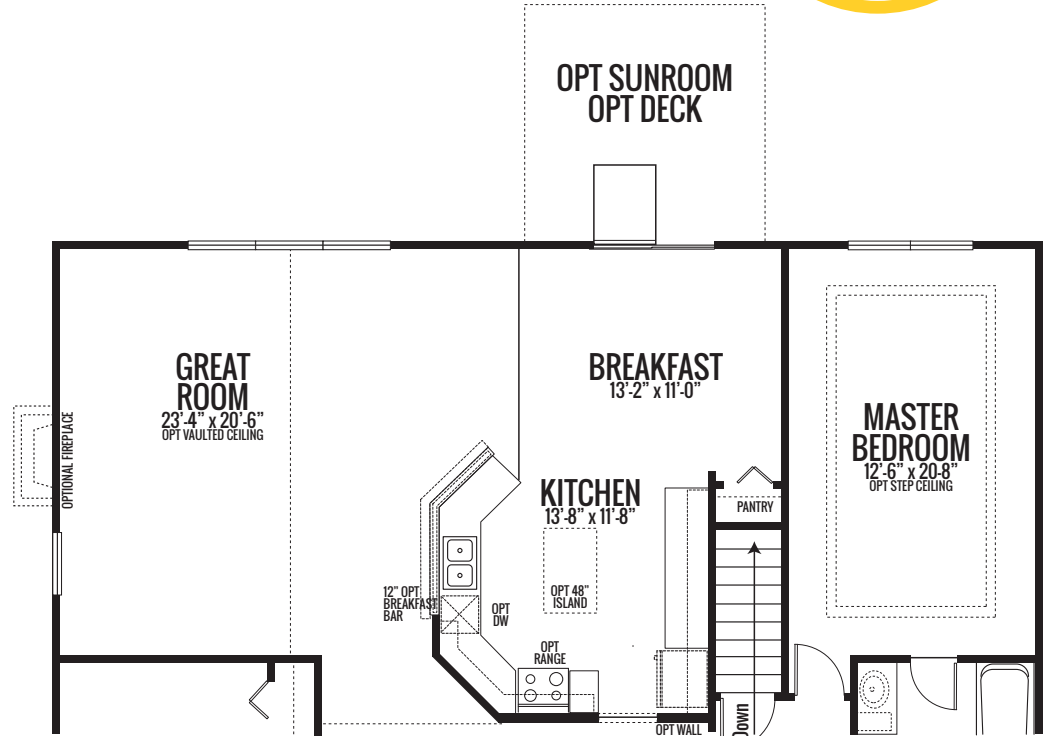
2005 sq. ft. | 3 Bed | 2 Bath



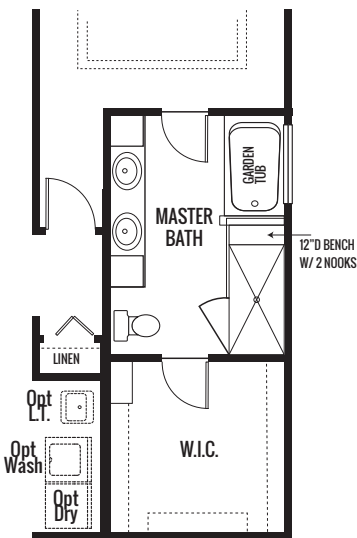
SUNROOM



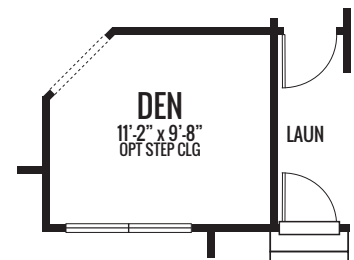
DECK



EXTENDED PLAN (+121 Sq. Ft.)



DELUXE SPA BATH



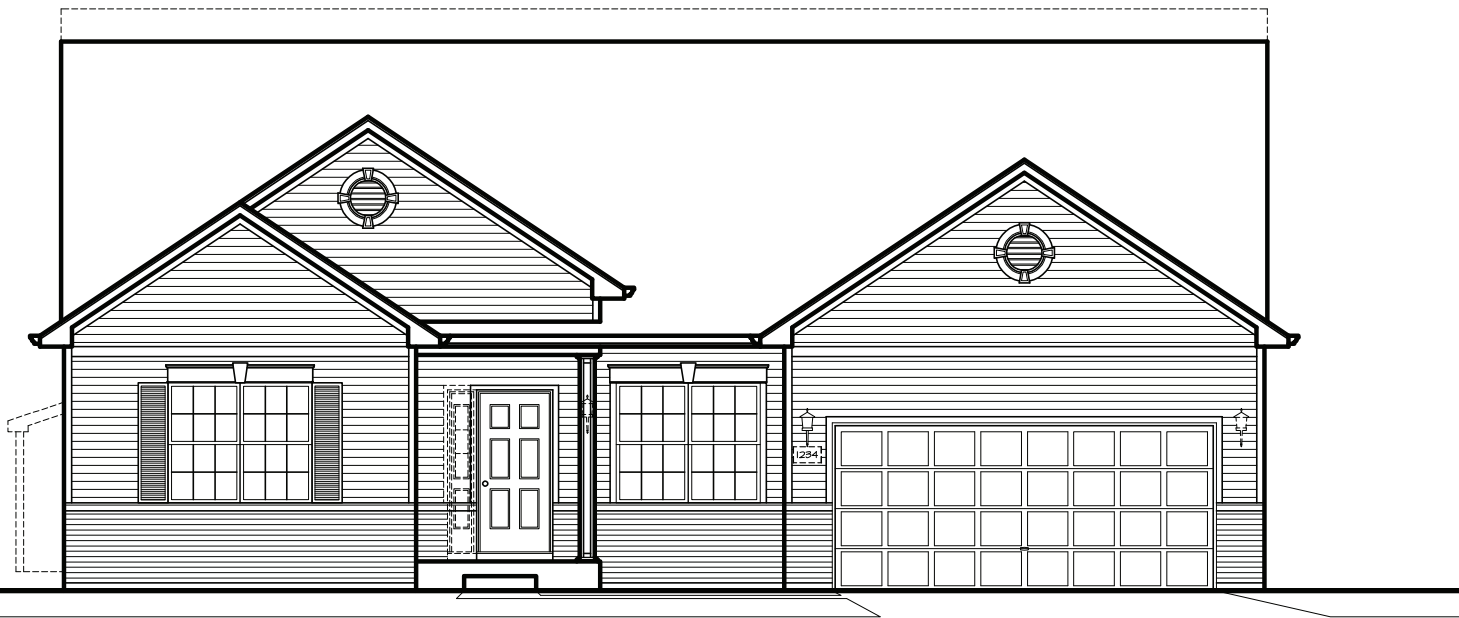
DEN ILO DINING

Artist's renderings may vary in precise detail as compared to actual construction. All dimensions are approximate. Providence Real Estate Development, LLC, in an effort to improve its product, reserves the right to make changes without notice. Actual home may be built as shown or reversed as dictated by engineered site plan.

# GRAND RIDGE

## THE WYSTERIA

2005 sq. ft. | 3 Bed | 2 Bath

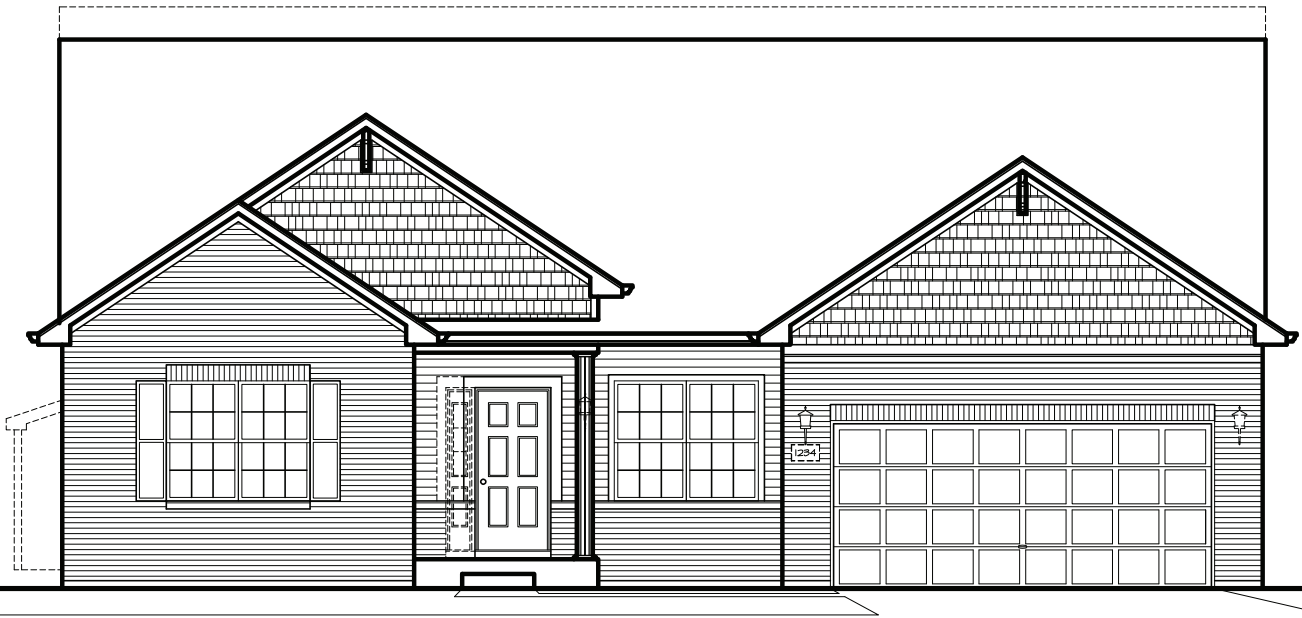


**ELEVATION "B"**

Artist's renderings may vary in precise detail as compared to actual construction. All dimensions are approximate. Providence Real Estate Development, LLC, in an effort to improve its product, reserves the right to make changes without notice. Actual home may be built as shown or reversed as dictated by engineered site plan.

# GRAND RIDGE THE WYSTERIA

2005 sq. ft. | 3 Bed | 2 Bath

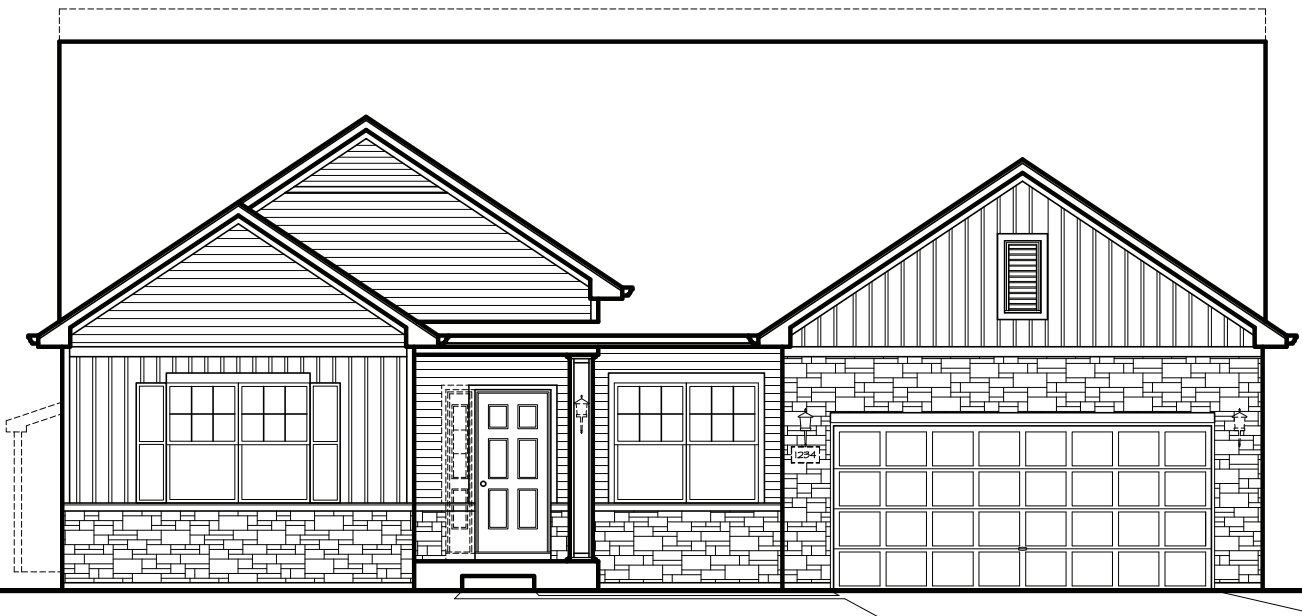


**ELEVATION "C"**

Artist's renderings may vary in precise detail as compared to actual construction. All dimensions are approximate. Providence Real Estate Development, LLC, in an effort to improve its product, reserves the right to make changes without notice. Actual home may be built as shown or reversed as dictated by engineered site plan.

# GRAND RIDGE THE WYSTERIA

2005 sq. ft. | 3 Bed | 2 Bath



**ELEVATION "D"**

Artist's renderings may vary in precise detail as compared to actual construction. All dimensions are approximate. Providence Real Estate Development, LLC, in an effort to improve its product, reserves the right to make changes without notice. Actual home may be built as shown or reversed as dictated by engineered site plan.