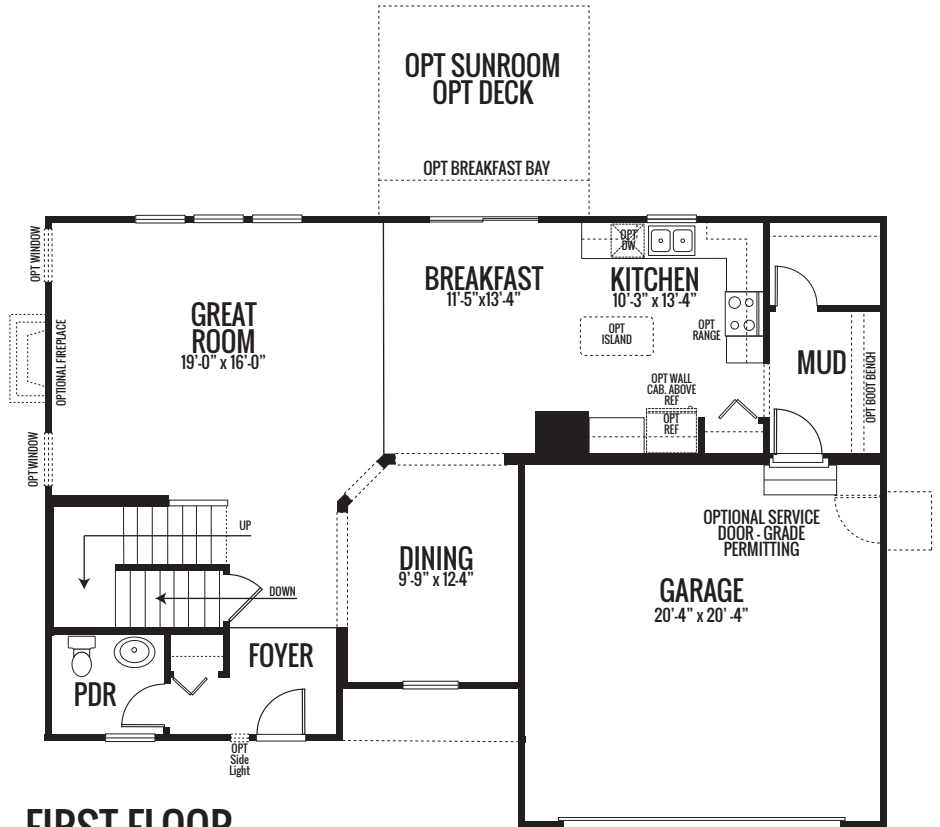
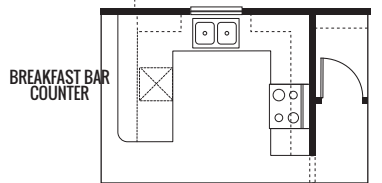
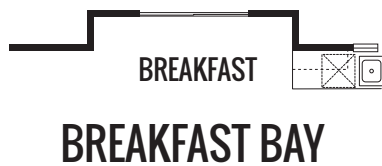
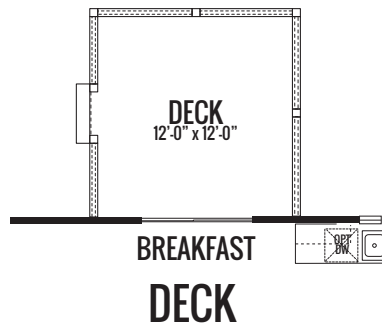
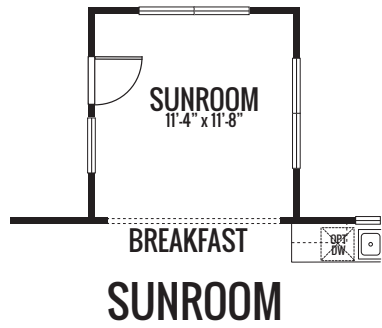


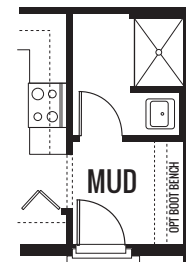
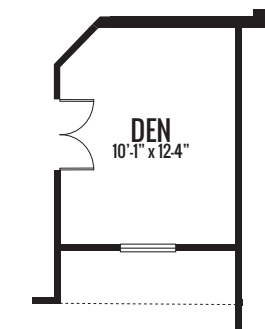
# GRAND RIDGE

## THE JASMINE

2629 sq. ft. | 4 Bed | 2.5 Bath



**FIRST FLOOR**

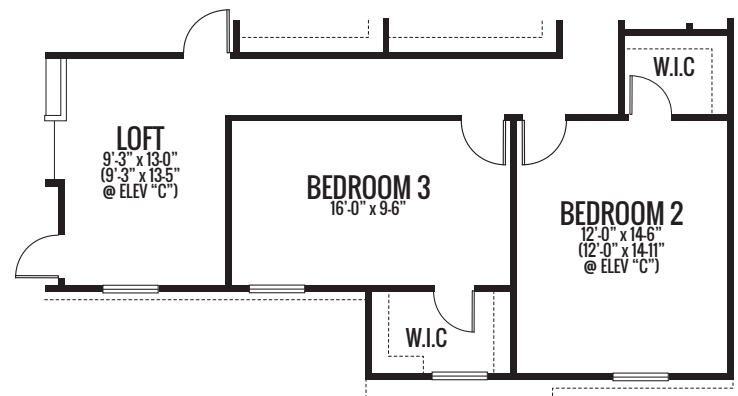
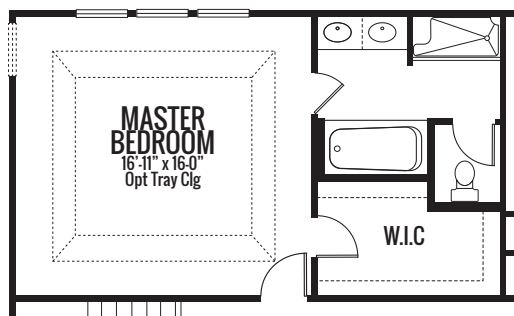
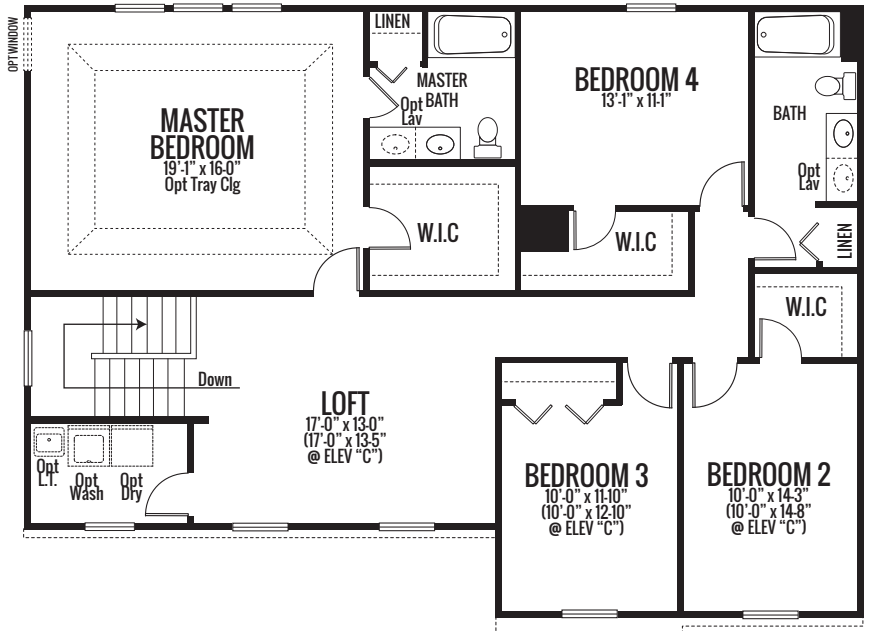
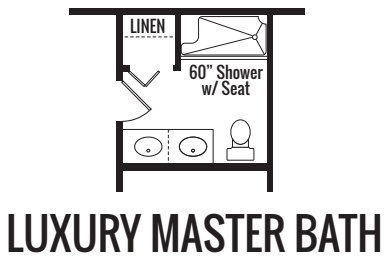


Artist's renderings may vary in precise detail as compared to actual construction. All dimensions are approximate. Providence Real Estate Development, LLC, in an effort to improve its product, reserves the right to make changes without notice. Actual home may be built as shown or reversed as dictated by engineered site plan.

# GRAND RIDGE

## THE JASMINE

2629 sq. ft. | 4 Bed | 2.5 Bath



Artist's renderings may vary in precise detail as compared to actual construction. All dimensions are approximate. Providence Real Estate Development, LLC, in an effort to improve its product, reserves the right to make changes without notice. Actual home may be built as shown or reversed as dictated by engineered site plan.

# GRAND RIDGE

## THE JASMINE

2629 sq. ft. | 4 Bed | 2.5 Bath



### ELEVATION "B"

Artist's renderings may vary in precise detail as compared to actual construction. All dimensions are approximate. Providence Real Estate Development, LLC, in an effort to improve its product, reserves the right to make changes without notice. Actual home may be built as shown or reversed as dictated by engineered site plan.

# GRAND RIDGE

## THE JASMINE

2629 sq. ft. | 4 Bed | 2.5 Bath



### ELEVATION "C"

Artist's renderings may vary in precise detail as compared to actual construction. All dimensions are approximate. Providence Real Estate Development, LLC, in an effort to improve its product, reserves the right to make changes without notice. Actual home may be built as shown or reversed as dictated by engineered site plan.

# GRAND RIDGE

## THE JASMINE

2629 sq. ft. | 4 Bed | 2.5 Bath



### ELEVATION "D"

Artist's renderings may vary in precise detail as compared to actual construction. All dimensions are approximate. Providence Real Estate Development, LLC, in an effort to improve its product, reserves the right to make changes without notice. Actual home may be built as shown or reversed as dictated by engineered site plan.