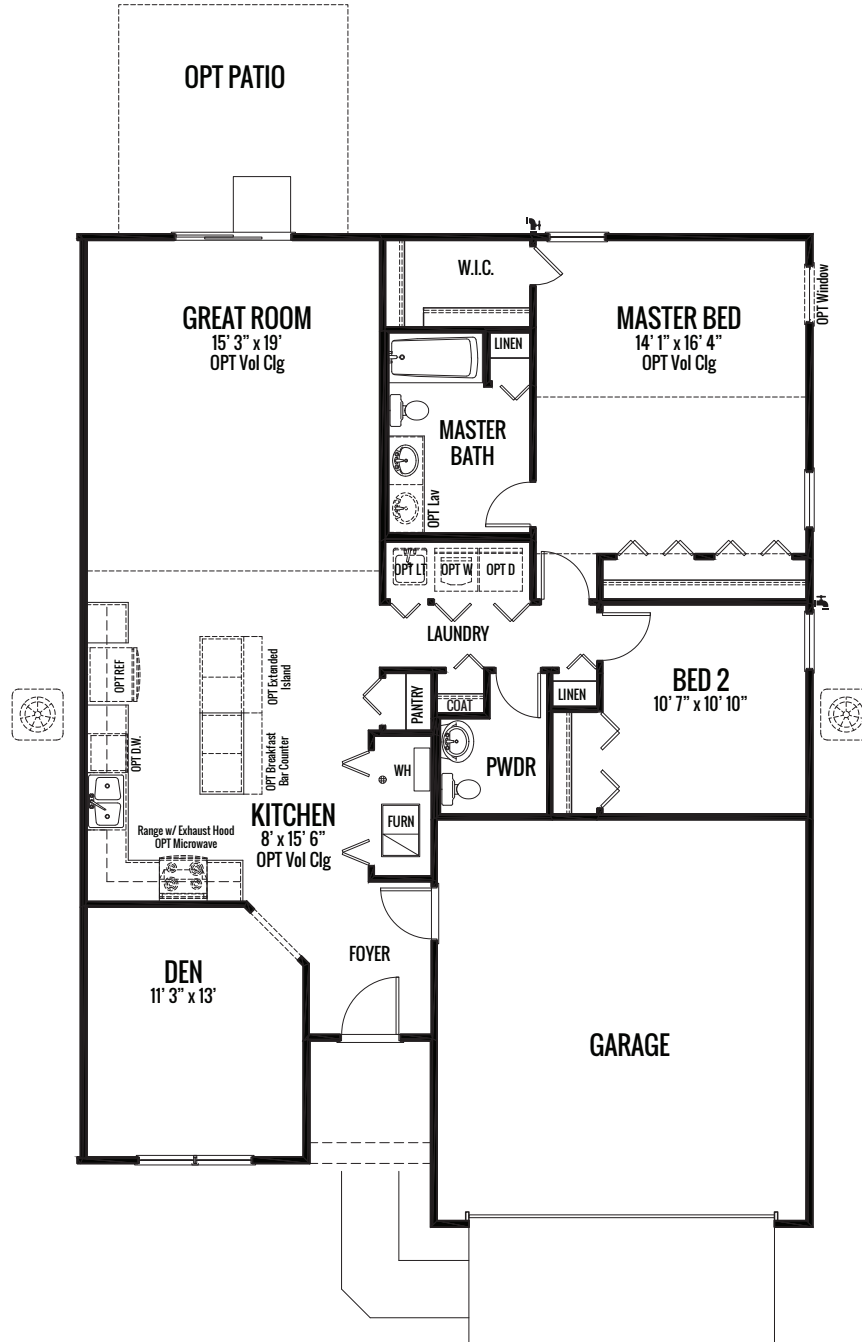


SAVANNAH COVE

THE AZALEA

1469 sq. ft. | 2-3 Bed | 1-2 Bath



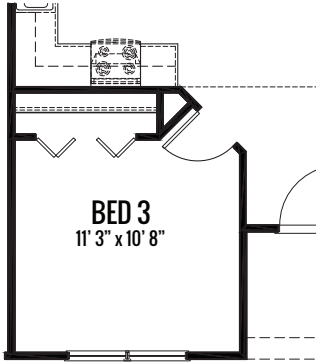
FIRST FLOOR

Artist's renderings may vary in precise detail as compared to actual construction. All dimensions are approximate. Providence Real Estate Development, LLC, in an effort to improve its product, reserves the right to make changes without notice. Actual home may be built as shown or reversed as dictated by engineered site plan.

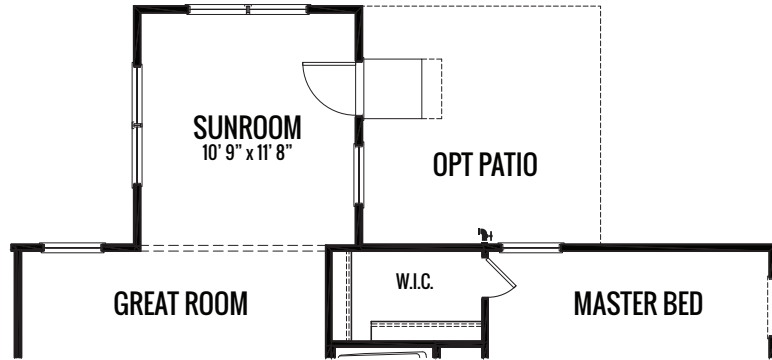
SAVANNAH COVE

THE AZALEA

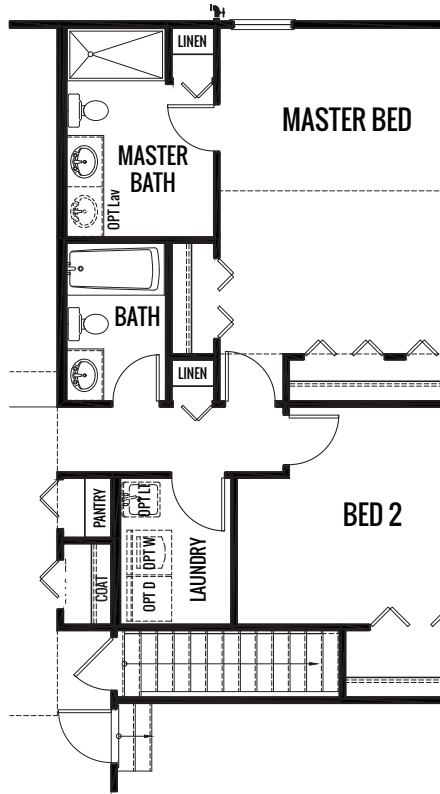
1469 sq. ft. | 2-3 Bed | 1-2 Bath



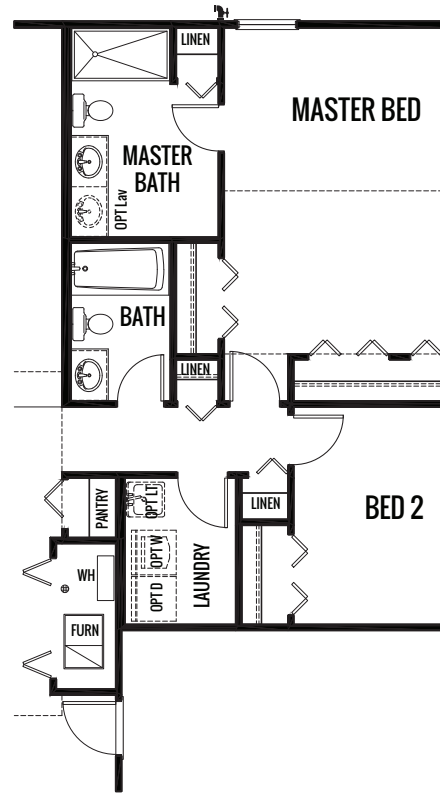
OPTIONAL BEDROOM 3



OPTIONAL SUNROOM



OPTIONAL 2 BATH (AT BASEMENT)



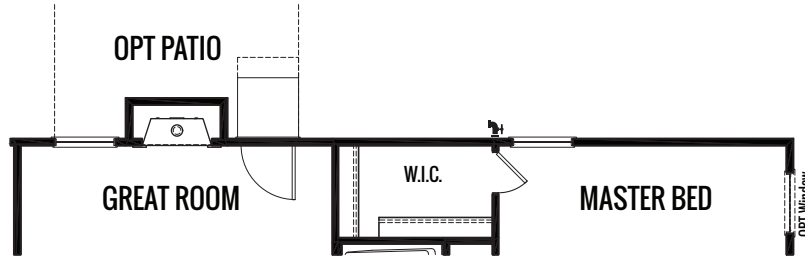
OPTIONAL 2 BATH (AT SLAB)

Artist's renderings may vary in precise detail as compared to actual construction. All dimensions are approximate. Providence Real Estate Development, LLC, in an effort to improve its product, reserves the right to make changes without notice. Actual home may be built as shown or reversed as dictated by engineered site plan.

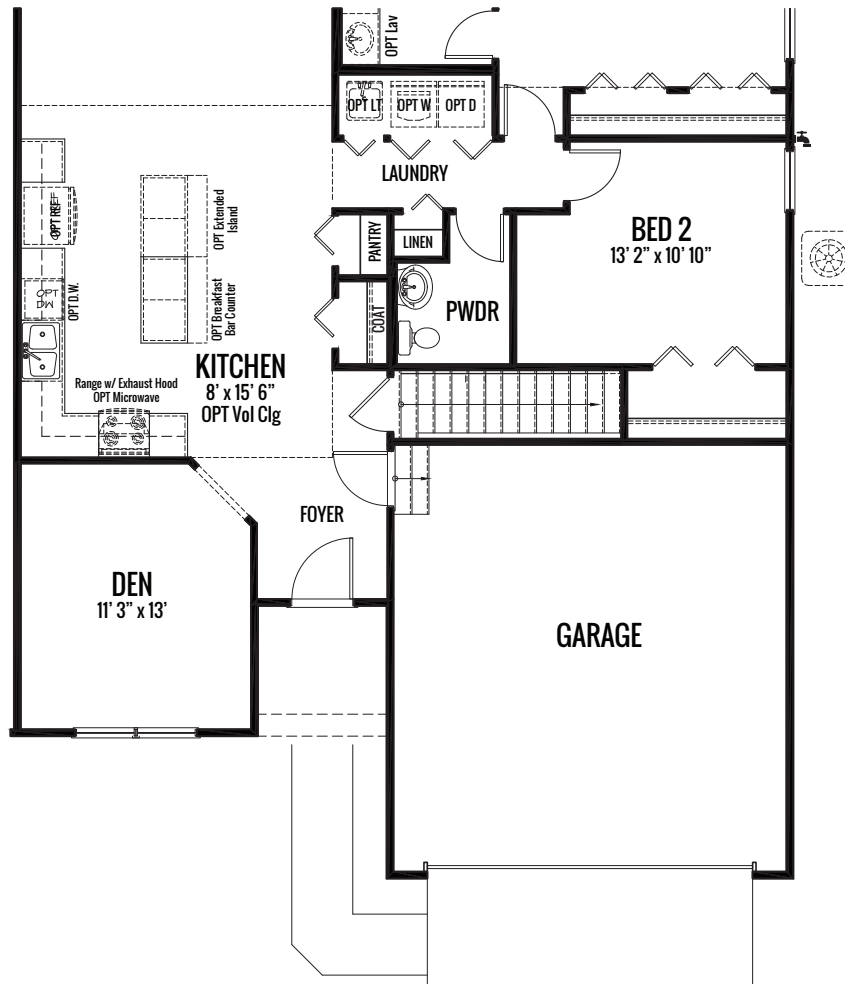
SAVANNAH COVE

THE AZALEA

1469 sq. ft. | 2-3 Bed | 1-2 Bath



OPTIONAL FIREPLACE



OPTIONAL BASEMENT

Artist's renderings may vary in precise detail as compared to actual construction. All dimensions are approximate. Providence Real Estate Development, LLC, in an effort to improve its product, reserves the right to make changes without notice. Actual home may be built as shown or reversed as dictated by engineered site plan.

SAVANNAH COVE

THE AZALEA

1469 sq. ft. | 2-3 Bed | 1-2 Bath



ELEVATION "A"

Artist's renderings may vary in precise detail as compared to actual construction. All dimensions are approximate. Providence Real Estate Development, LLC, in an effort to improve its product, reserves the right to make changes without notice. Actual home may be built as shown or reversed as dictated by engineered site plan.

SAVANNAH COVE

THE AZALEA

1469 sq. ft. | 2-3 Bed | 1-2 Bath



ELEVATION "B"

Artist's renderings may vary in precise detail as compared to actual construction. All dimensions are approximate. Providence Real Estate Development, LLC, in an effort to improve its product, reserves the right to make changes without notice. Actual home may be built as shown or reversed as dictated by engineered site plan.