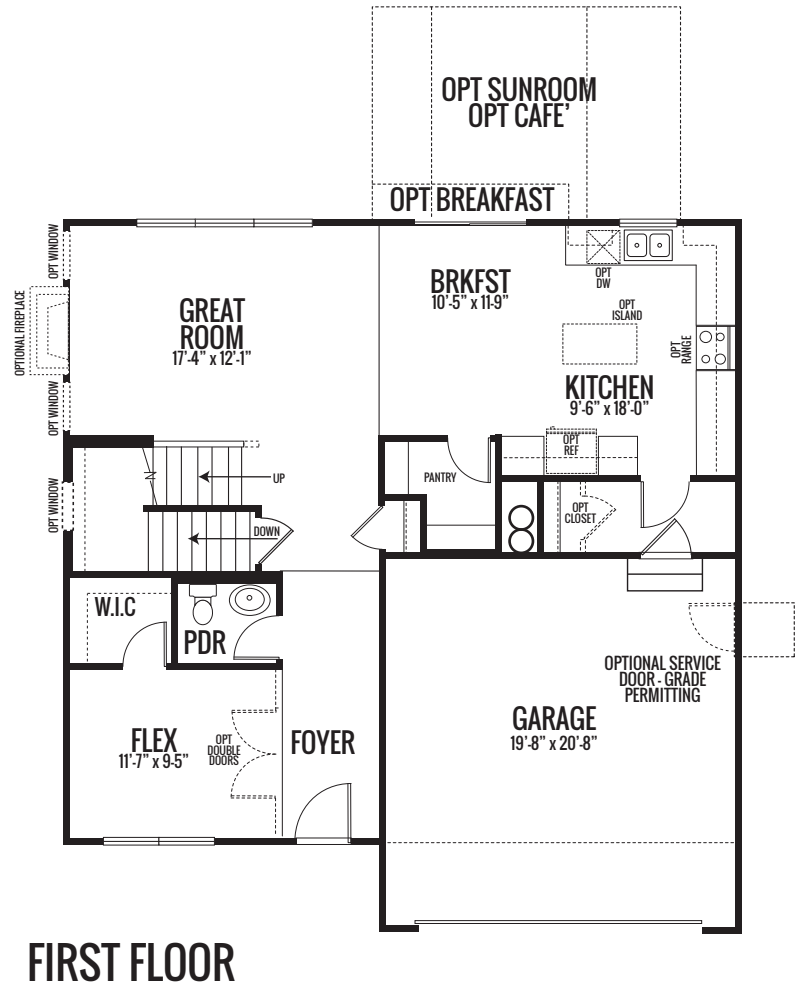
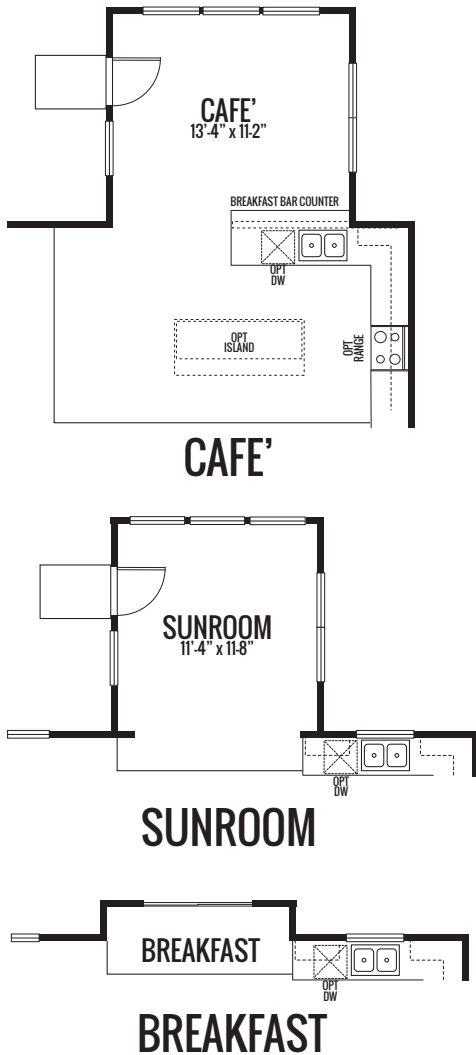


# THE FAIRWAYS

## THE ONYX

2340 sq. ft. | 3-4 Bed | 2.5-3 Bath

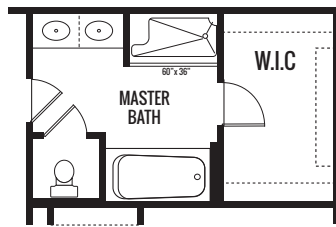


Artist's renderings may vary in precise detail as compared to actual construction. All dimensions are approximate. Providence Real Estate Development, LLC, in an effort to improve its product, reserves the right to make changes without notice. Actual home may be built as shown or reversed as dictated by engineered site plan.

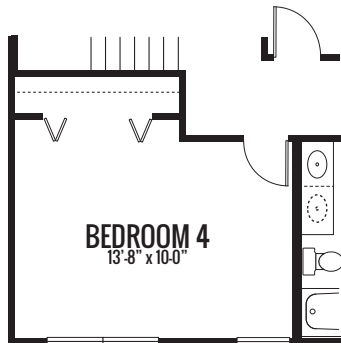
# THE FAIRWAYS

## THE ONYX

2340 sq. ft. | 3-4 Bed | 2.5-3 Bath



LUXURY MASTER BATH



BEDROOM 4



SECOND FLOOR

Artist's renderings may vary in precise detail as compared to actual construction. All dimensions are approximate. Providence Real Estate Development, LLC, in an effort to improve its product, reserves the right to make changes without notice. Actual home may be built as shown or reversed as dictated by engineered site plan.

# THE FAIRWAYS

## THE ONYX

2340 sq. ft. | 3-4 Bed | 2.5-3 Bath



### ELEVATION "B"

Artist's renderings may vary in precise detail as compared to actual construction. All dimensions are approximate. Providence Real Estate Development, LLC, in an effort to improve its product, reserves the right to make changes without notice. Actual home may be built as shown or reversed as dictated by engineered site plan.

# THE FAIRWAYS

## THE ONYX

2340 sq. ft. | 3 - 4 Bed | 2.5 - 3 Bath



**ELEVATION "C"**

Artist's renderings may vary in precise detail as compared to actual construction. All dimensions are approximate. Providence Real Estate Development, LLC, in an effort to improve its product, reserves the right to make changes without notice. Actual home may be built as shown or reversed as dictated by engineered site plan.

# THE FAIRWAYS

## THE ONYX

2340 sq. ft. | 3 - 4 Bed | 2.5 - 3 Bath



**ELEVATION "D"**

Artist's renderings may vary in precise detail as compared to actual construction. All dimensions are approximate. Providence Real Estate Development, LLC, in an effort to improve its product, reserves the right to make changes without notice. Actual home may be built as shown or reversed as dictated by engineered site plan.