

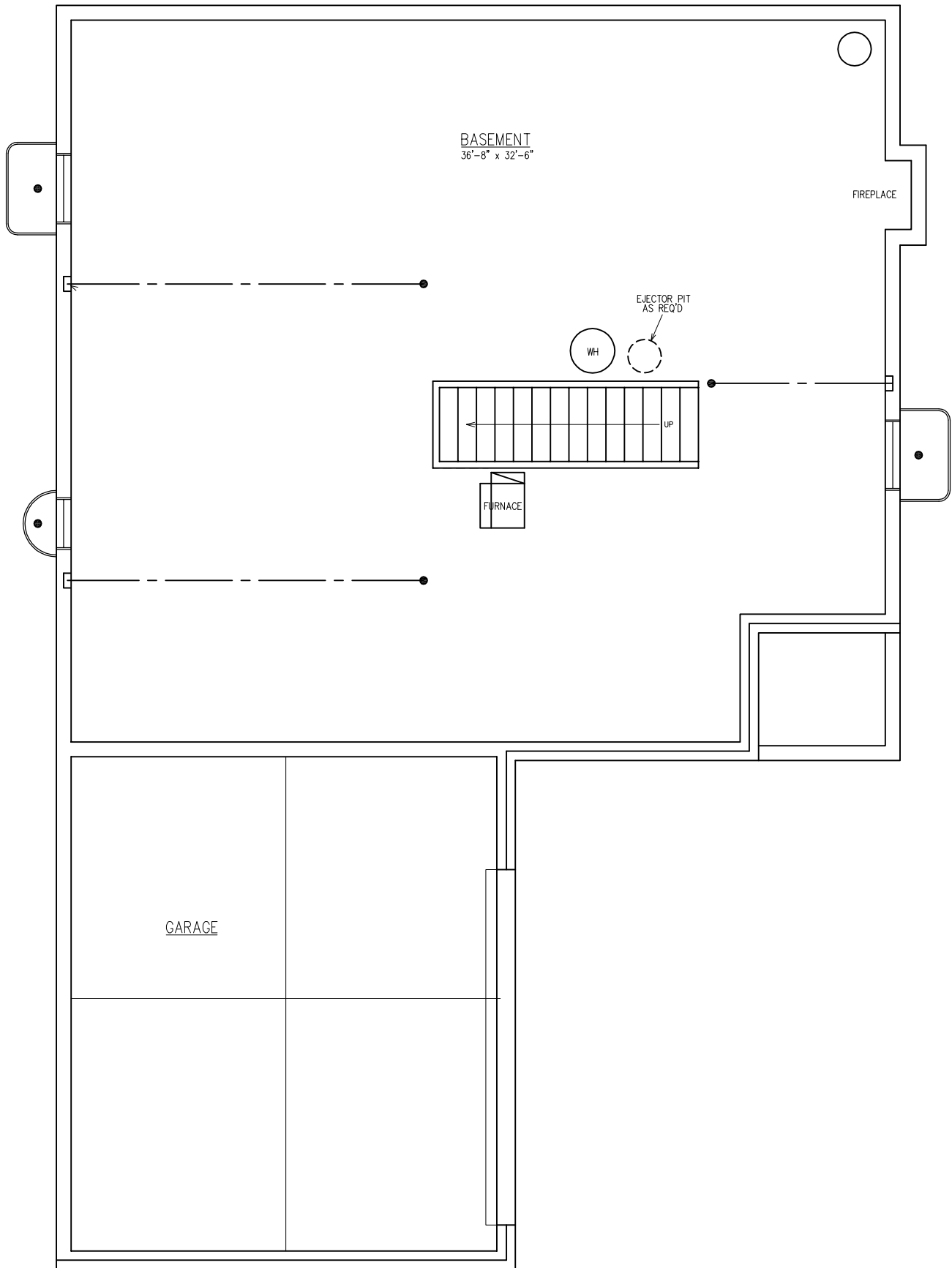


FRONT ELEVATION

MERION II

ELEVATION "C"

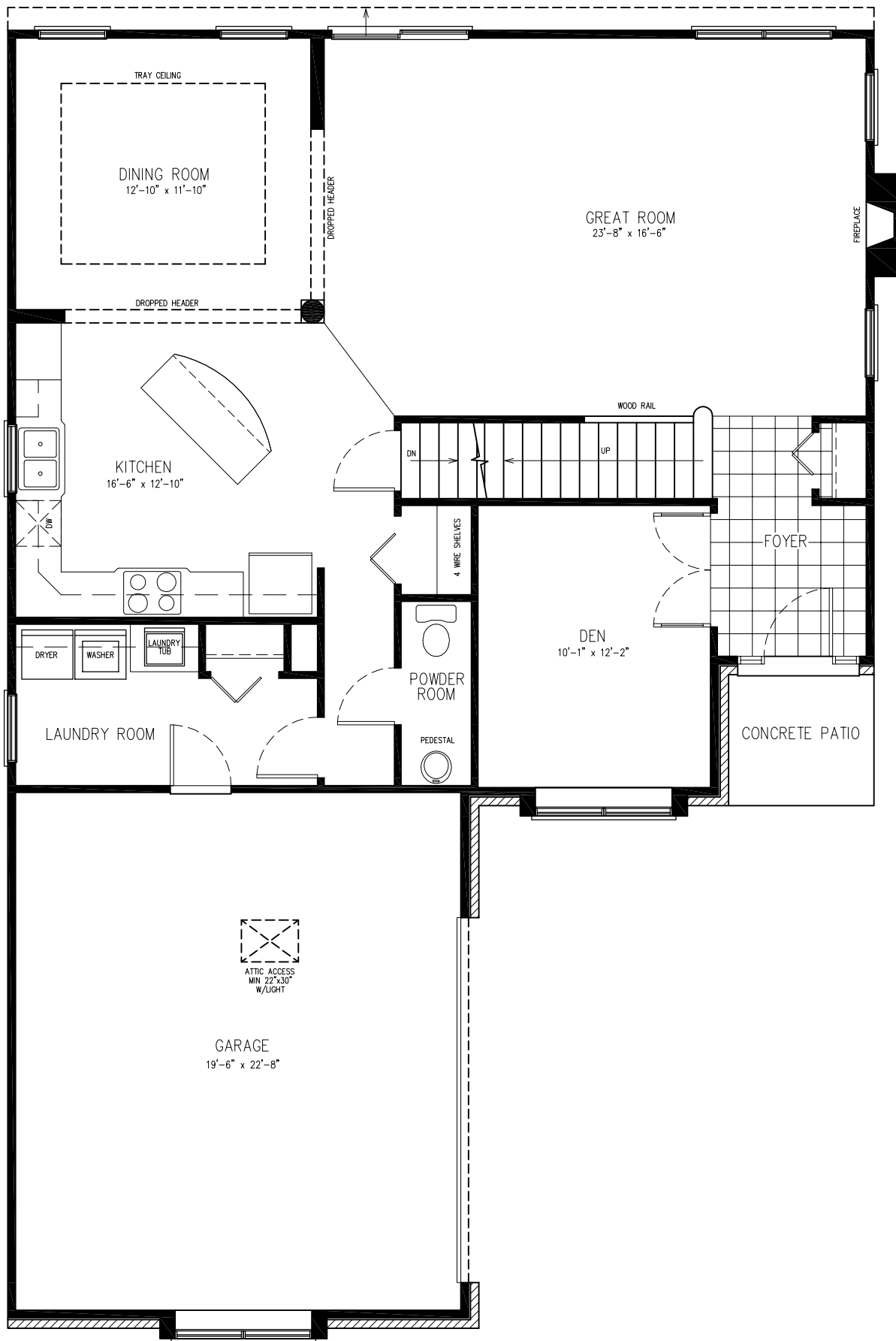
2462 SF TOTAL



FOUNDATION PLAN

MERION II

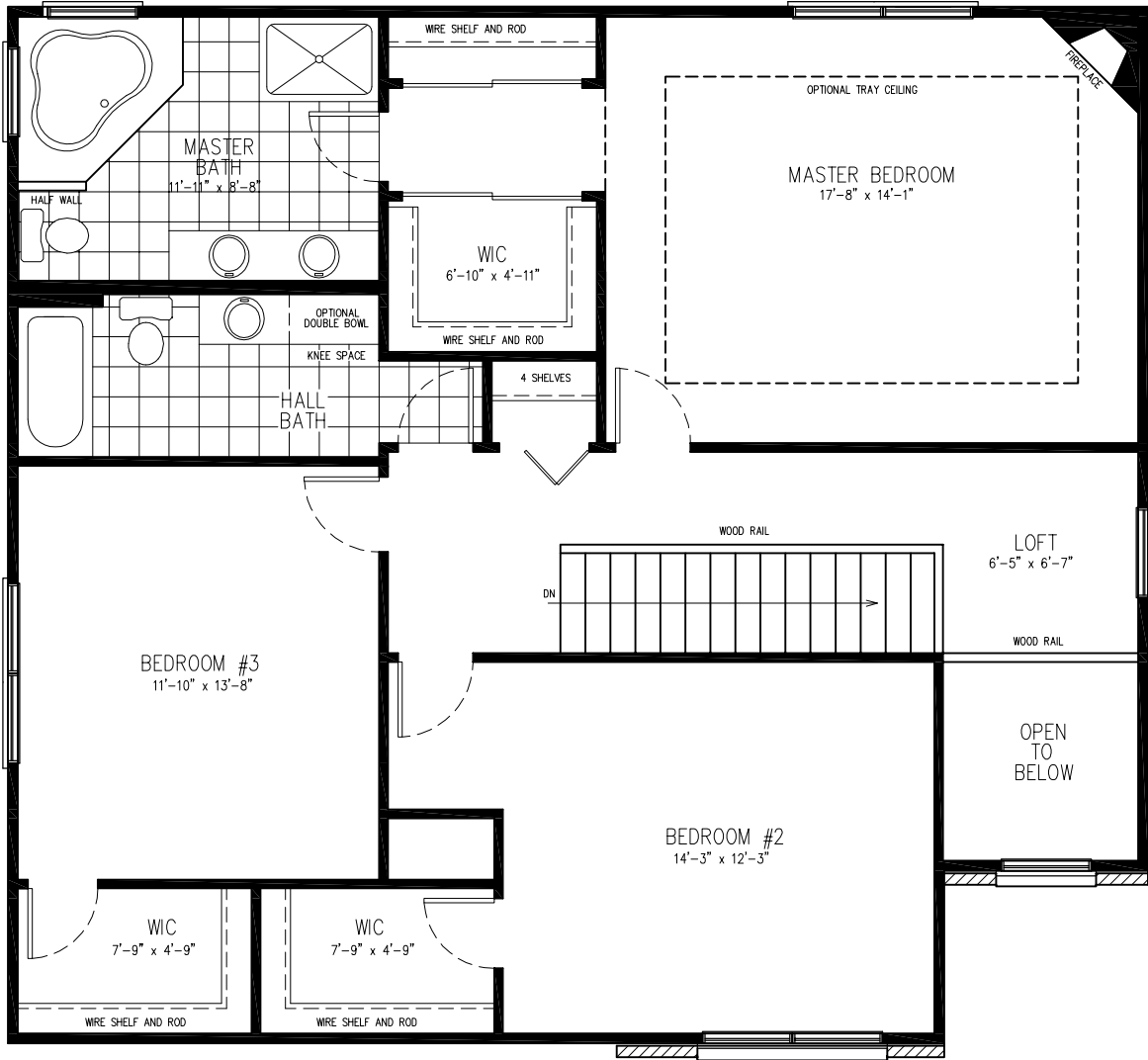
1251 SF / 2462 SF TOTAL



FIRST FLOOR PLAN

MERION II

1251 SF / 2462 SF TOTAL



SECOND FLOOR PLAN

MERION II

1211 SF / 2462 SF TOTAL